

CHECK-IN

ERBACHER the food family



2.1 TIME BOOKING CONFIRMATION

Supplier/Carrier receive an e-mail with confirmation of Booking. In attachment should be a pdf file.

As a result of this, that file should be printed or shared to the Driver.

2.1 TIME BOOKING CONFIRMATION

The most important data for Driver should
be
Time Booking Reference Code
&
QR Code

We hereby confirm your time booking with the number 103109. The following time slots were created:

- Slot: 45572
 - Planned Start: **14-05-2026 07:00**
 - Assigned Deliveries:
 - Inbound Delivery: **0182274071**
 - Document Number: **4500224890**
 - Item 000010/00010: VP Josicat Sterilised Classic 15kg+3kg



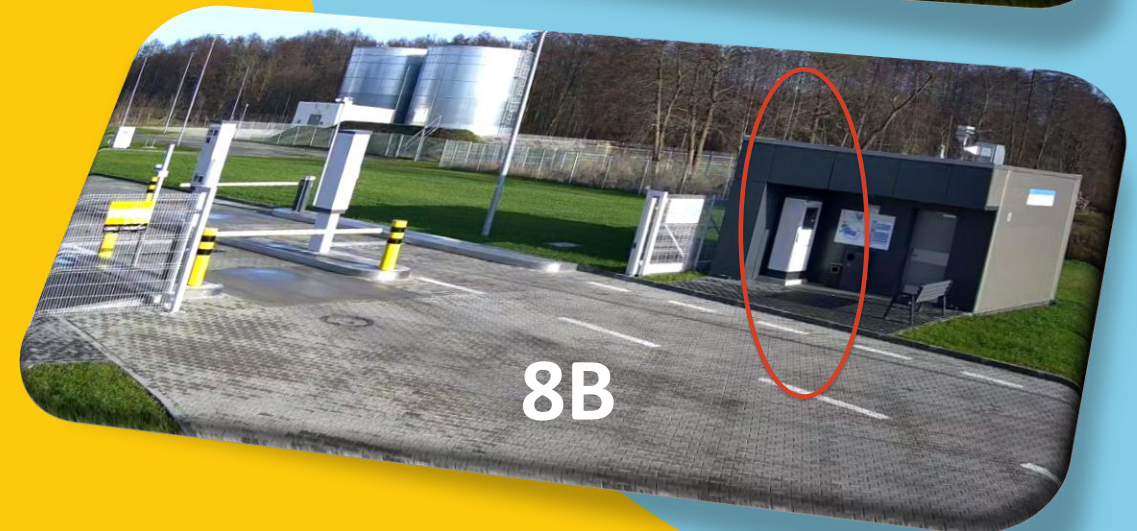
Time Booking Reference Code: **96690826**

2.2 CHECK-IN LOCATION

BULDINGS 8A or 8B:

In these buildings are Terminals (PC) where The Driver should complete CHECK-IN:

- Verify & Confirm Data (from Booking Process)
- Fill the Cleaning Document
- Confirm the Safety Instruction



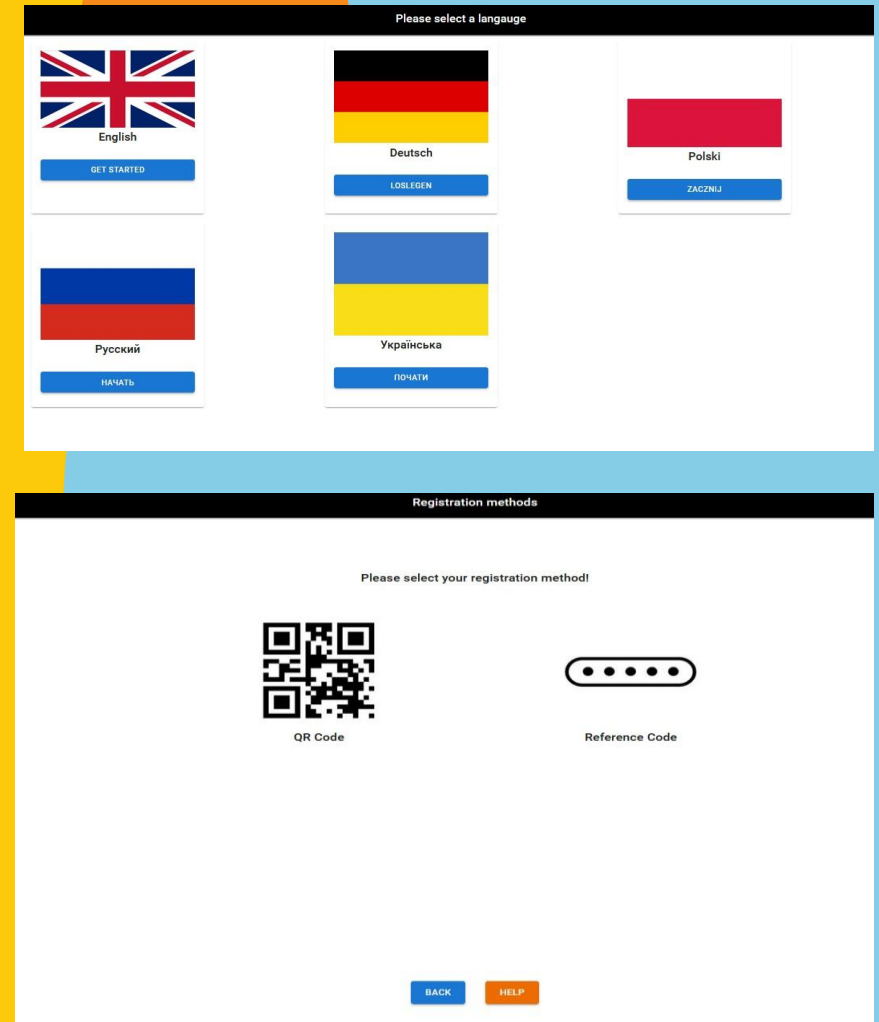
ERBACHER
the food family

2.2 CHECK-IN LOCATION

The PC is equipped with a touch screen so each processes can be done by touching the screen.

The First thing driver should select language of CHECK-IN and then after it select the method of Identify Booked Delivery.

ERBACHER
the food family



2.3 DATA VERIFICATION

Next System will provide data to screen to verify data from BOOKING stage.

If everything is correct the Driver presses just button CONFIRM if not then CHANGE.

Important thing is to fill phone number and license plate number without spaces like in sample beside.

Please verify/complete your data!

First Name	Driver
Email	abc@abc.pl
Phone Number	+48663661940
Number Plate	PNT123432
License Plate Trailer	
Supplier	YX
Comment	

CONFIRM **CHANGE** **BACK** **CANCEL**

Reserved Time Slots
Delivery TEST2
> Item: 00000000010000004, Mais

By clicking "Confirm", you consent to the storage of your personal data in our system. Your data will not be shared with third parties.

Please verify/complete your data!

Driver Name *	Driver
Email *	
Phone Number *	+48123456789
Number Plate *	PNT123432
License Plate Trailer	
Supplier *	YX
Comment	

CONFIRM **CANCEL**

Reserved Time Slots
Delivery TEST2
> Item: 00000000010000004, Mais

Phone Number
48663661940

tab q w e r t y u i o p [] \
caps lock a s d f g h j k l ; ' enter
shift z x c v b n m , . / shift
.com @ close

2.3 DATA VERIFICATION

The Verification can be Confirmed entering code sent to mobile phone by SMS

Please verify yourself!

You will receive a verification code to your Mobile phone. Please enter the provided code.

[CONFIRM](#) [BACK](#) [HELP](#)

2.4 CLEANING DOCUMENT

All fields are mandatory:

-Materials descriptions

-IDTF Number of materials

-Cleaning method for each from legend

Important:

Supplier/Carrier should provide the correct IDTF numbers to the Driver.

IDTF data and cleaning process

Please fulfill your data and cleaning process form last freights.

Third Last Freight Second Last Freight Last Freight

Third last freight - material description * Second last freight - material description * Last freight - material description *

IDTF Material * Cleaning metho... IDTF Material * Cleaning metho... IDTF Material * Cleaning metho...

Cleaning legend
A = Dry cleaning B = Wet cleaning with water
C = Wet cleaning with water and cleaning agent D = Wet cleaning with water, with cleaning agent and disinfection

Signature

CONFIRM BACK HELP

IDTF data and cleaning process

Please fulfill your data and cleaning process form last freights.

Third Last Freight Second Last Freight Last Freight

Third last freight - material description * Second last freight - material description * Last freight - material description *

Meis Meis Meis

IDTF Material * Cleaning method * IDTF Material * Cleaning method * IDTF Material * Cleaning method *

40341 A 40341 A 40341 A

Cleaning legend
A = Dry cleaning B = Wet cleaning with water
C = Wet cleaning with water and cleaning agent D = Wet cleaning with water, with cleaning agent and disinfection

Signature

CONFIRM BACK HELP

2.5 SAFETY INSTRUCTION

Checkbox Read and Confirm must be marked

Also

Signature should be made


Safety Instruction

1. Always wear appropriate safety gear, such as helmets, gloves, and safety goggles, when working.
2. Ensure that all machinery and equipment are properly maintained and in good working condition before use.
3. Familiarize yourself with emergency procedures and the location of emergency exits and first aid kits.
4. Follow all safety protocols and guidelines provided by your supervisor or employer.
5. Do not operate machinery or equipment if you are not trained or authorized to do so.
6. Keep work areas clean and organized to prevent accidents and injuries.
7. Report any safety hazards or concerns to your supervisor immediately.
8. Take regular breaks to prevent fatigue and maintain focus while working.
9. Never attempt to bypass safety mechanisms or guards on machinery or equipment.
10. Always follow proper lifting techniques to avoid strains and injuries.

Read and confirm safety instruction

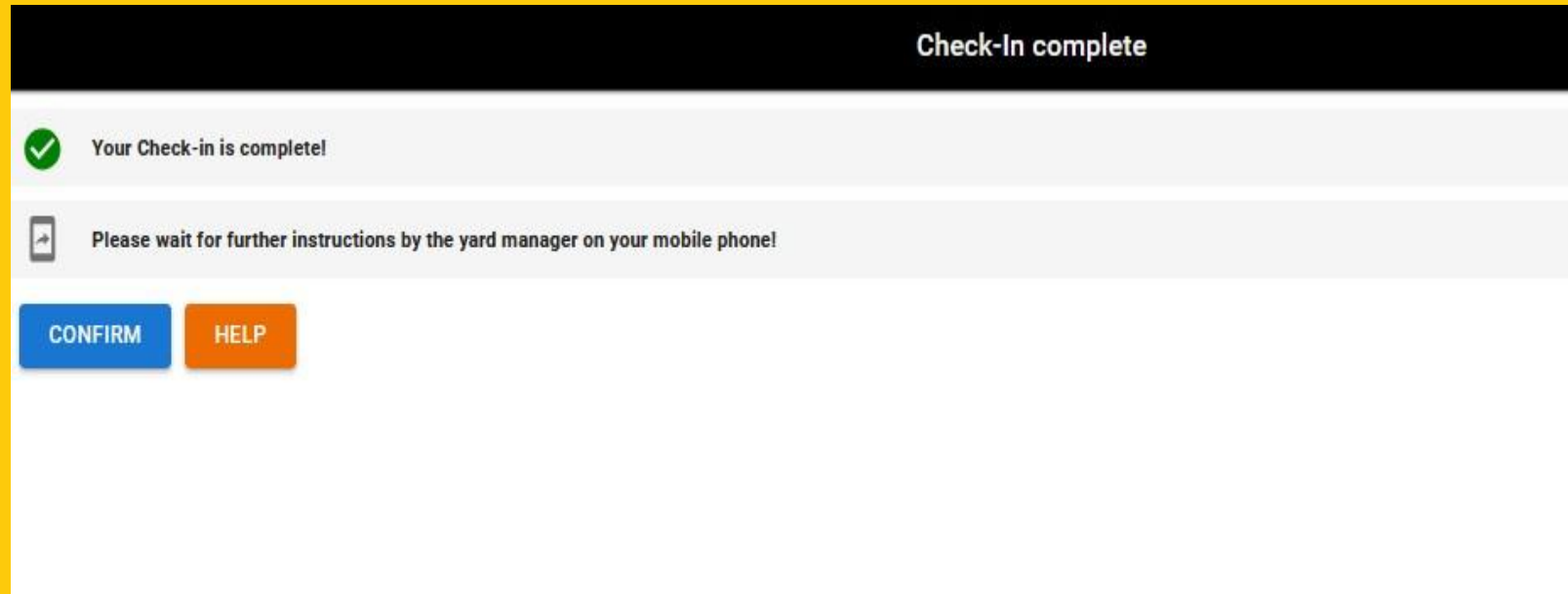
[CONFIRM](#) [BACK](#) [HELP](#)

Signature



2.6 SUMMARY

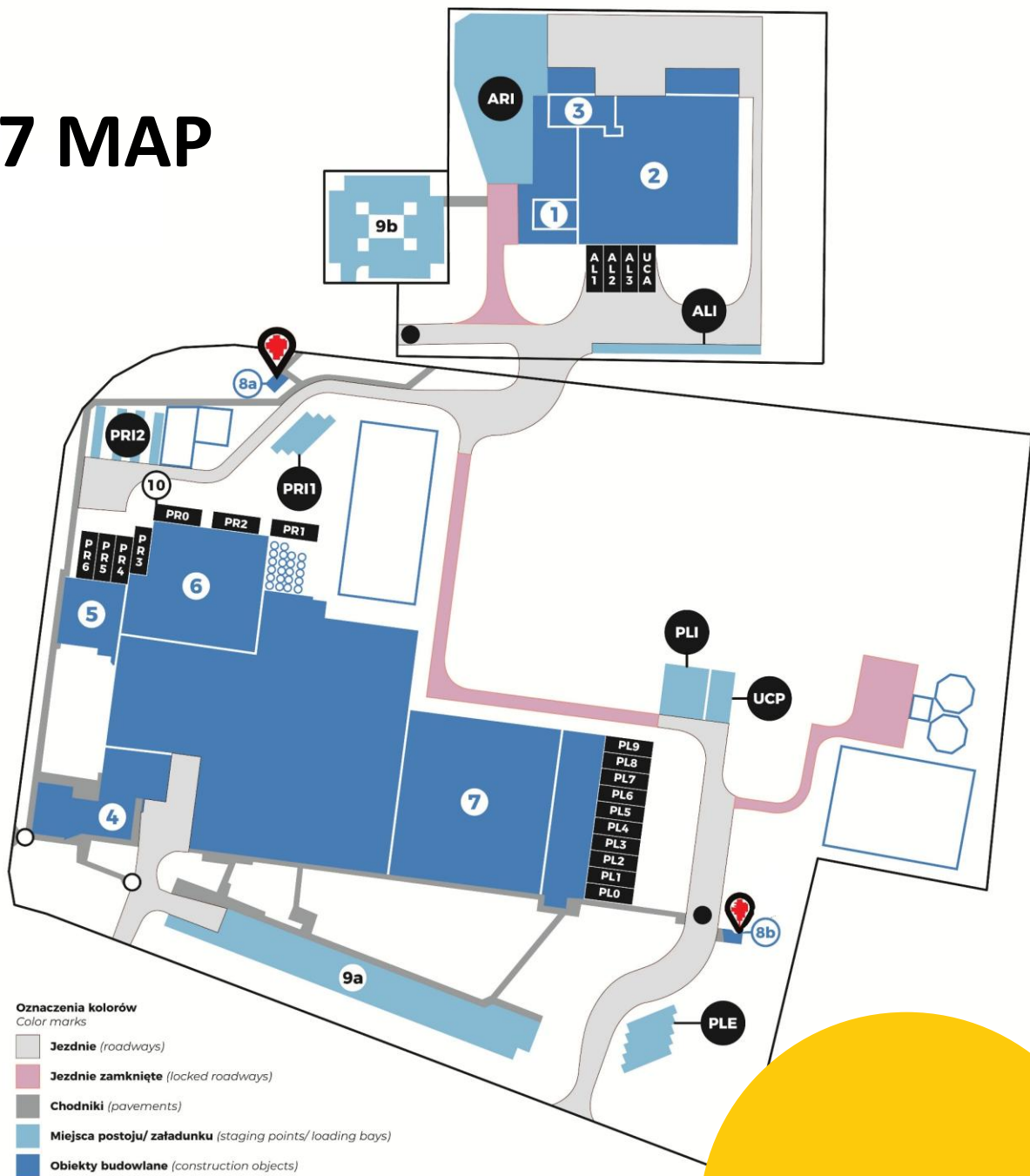
Check-in is now complete.



The driver should Confirm & wait for further instructions, which will be sent via SMS.

Like “Please Drive to...”

2.7 MAP



Oznaczenia kolorów

Color marks

- Jezdnie (roadways)
- Jezdnie zamknięte (locked roadways)
- Chodniki (pavements)
- Miejsca postoju/załadunku (staging points/loading bays)
- Obiekty budowlane (construction objects)

Oznaczenia kluczowe

Key marks

Bramki dostępu.
Access gateway.

Bramy wjazdowe.
Entrance gate.

Plant AGRAR

1 Budynek biurowy.
Office building.

2 Hala magazynowa.
Warehouse.

3 Hala produkcyjna.
Production hall.

Plant Petfood

4 Budynek biurowy.
Office building.

5 Hala przyjęć surowca.
Income hall.

6 Hala magazynowa.
Warehouse.

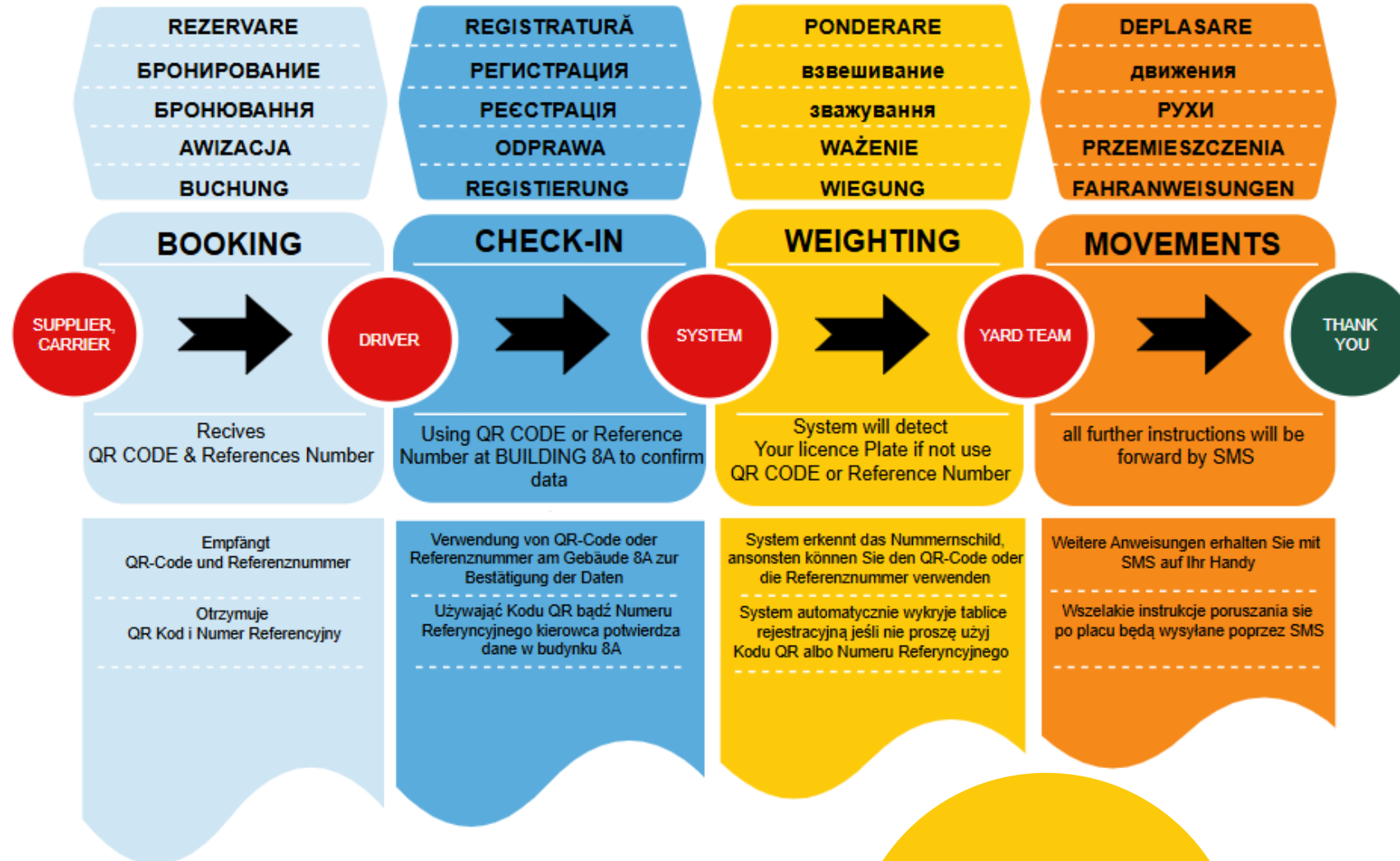
7 Hala logistyczna.
Logistics center.

8 Budynek socjalny dla kierowców samochodów ciężarowych.
Social building for truck drivers.

9 Parking dla samochodów osobowych.
Parking for cars.

10 Stanowisko poboru próbek.
Sample taking station.

2.8 PROCESS FLOWCHART



**If you have any questions, please
contact us directly**

Yard Coordinator :

Phone Number: +48 532466566

or

E-mail: yard@josera.pl

ERBACHER the food family

Josera

**GREEN
PETFOOD**

JOSI

BAVARO

Josera.

ACTIVEPRO
by Josera.

ERBACHER

ERBACHER the food family